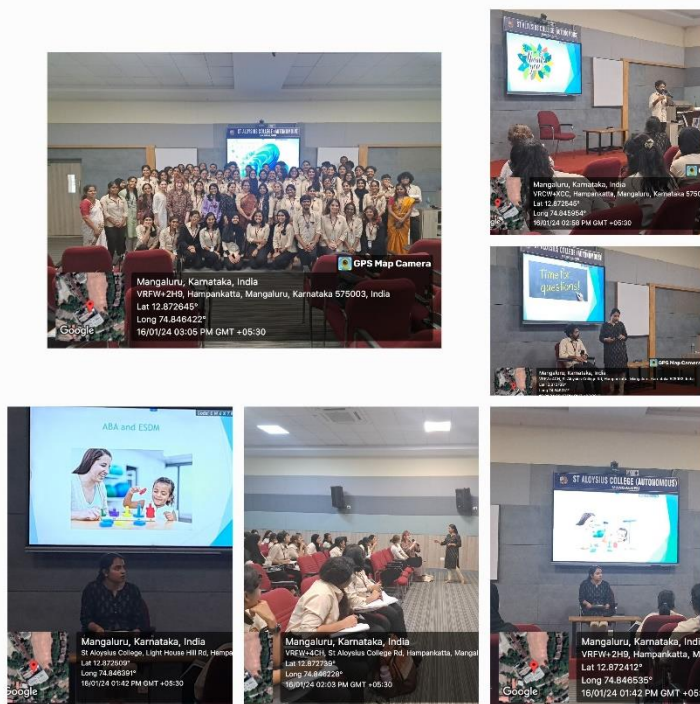



ABA and ESDM

The Department of Psychology held a session on ABA and ESDM on 16th January 2024, given by Ms Refana Lobo, Early Intervention Therapist, Melbourne, Australia in Sanidya hall.

It focused on ABA (applied behavior analysis) which is a therapeutic technique that helps in understanding and improving behaviors through systematic interventions, often used for individuals with autism spectrum disorder (ASD) and on ESDM (Early Start Denver Model) is an early intervention program designed to support toddlers and young children with ASD, emphasizing social interaction, communication, and developmental skills within natural settings. Through this session we learned how to enhance the lives of individuals with Autism through tailored strategies and interventions. The session benefitted around 70 students.





 GPS Map Camera

Mangaluru, Karnataka, India
VRFW+2H9, Hampankatta, Mangaluru, Karnataka 575003, India
Lat 12.872645°
Long 74.846422°
16/01/24 03:05 PM GMT +05:30

Google